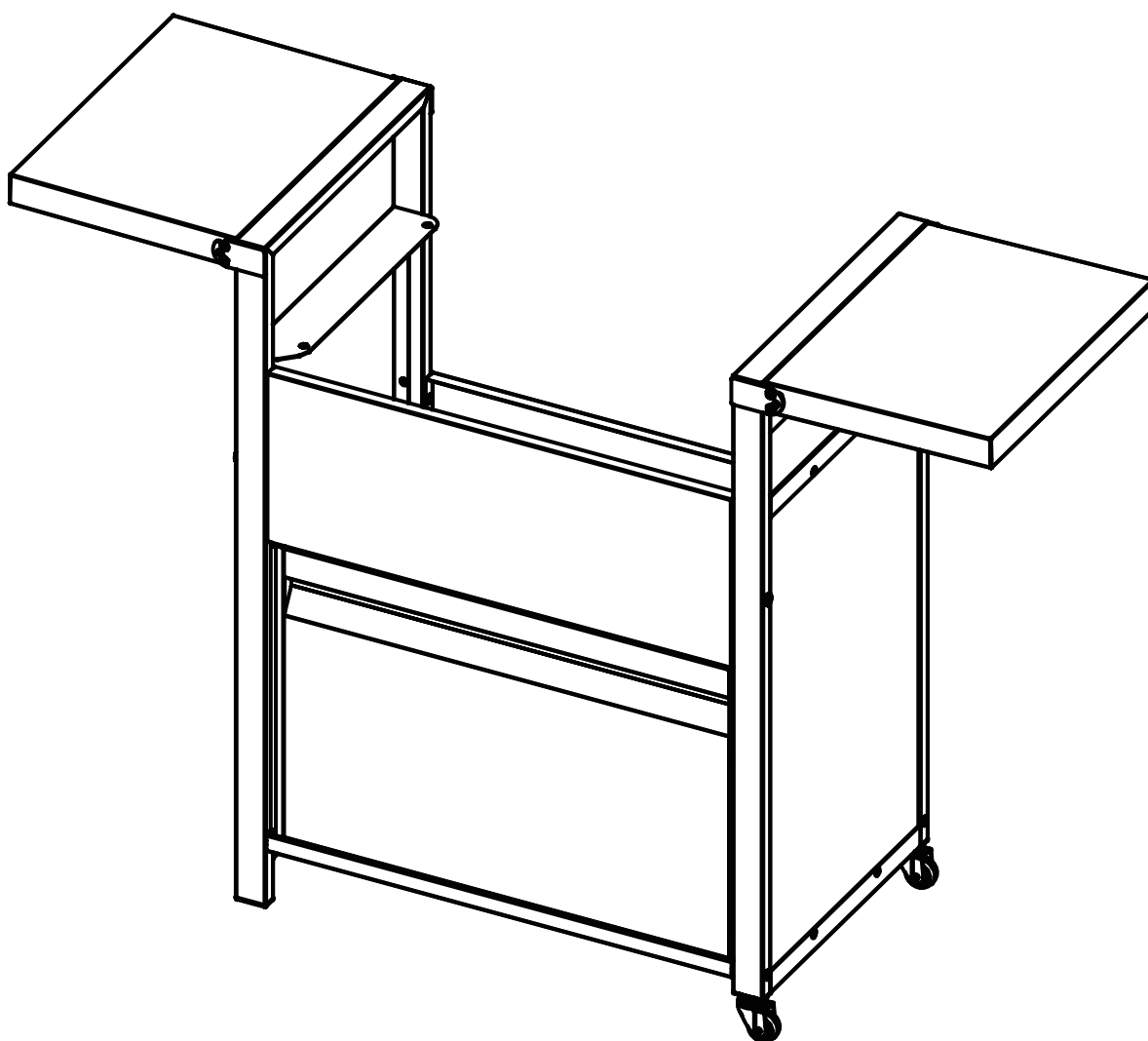




TROLLEY ASSEMBLY INSTRUCTION



Crossray UK – Millbrook House, Grange Drive, Hedge End, Southampton S030 2DF

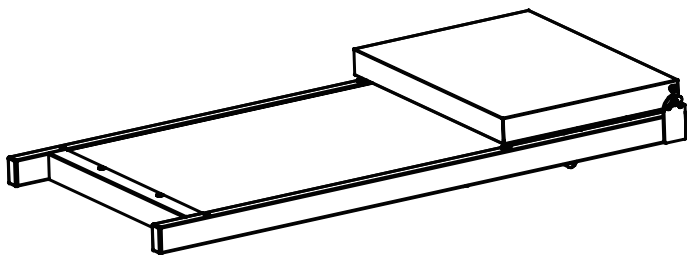
T: 0344 879 1227 | E: flamemarketinguk@glendimplex.com

www.crossraybbq.co.uk

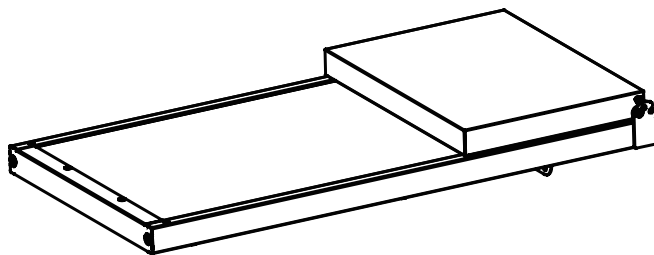
Follow us @crossraybbq

Part list

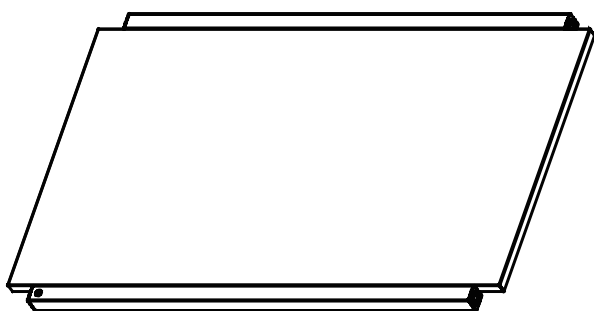
① Trolley Side Left (1Pcs)



② Trolley Side Right (1Pcs)



③ Bottom Panel (1Pcs)



④ Door (1Pcs)



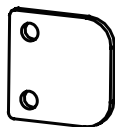
⑤ Front Panel (1Pcs)



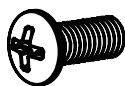
⑥ Back Panel (1Pcs)



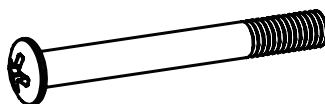
⑦ Door Stop Plate (1Pcs)



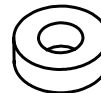
⑧ Screw (10Pcs)



⑨ Part Thread Screw (4Pcs)



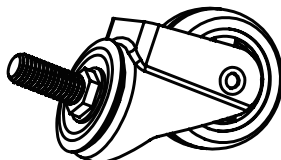
⑩ Plastic (1Pcs)



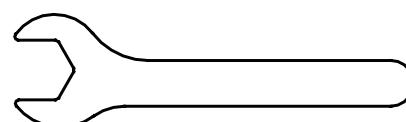
⑪ Spring Washer (2Pcs)



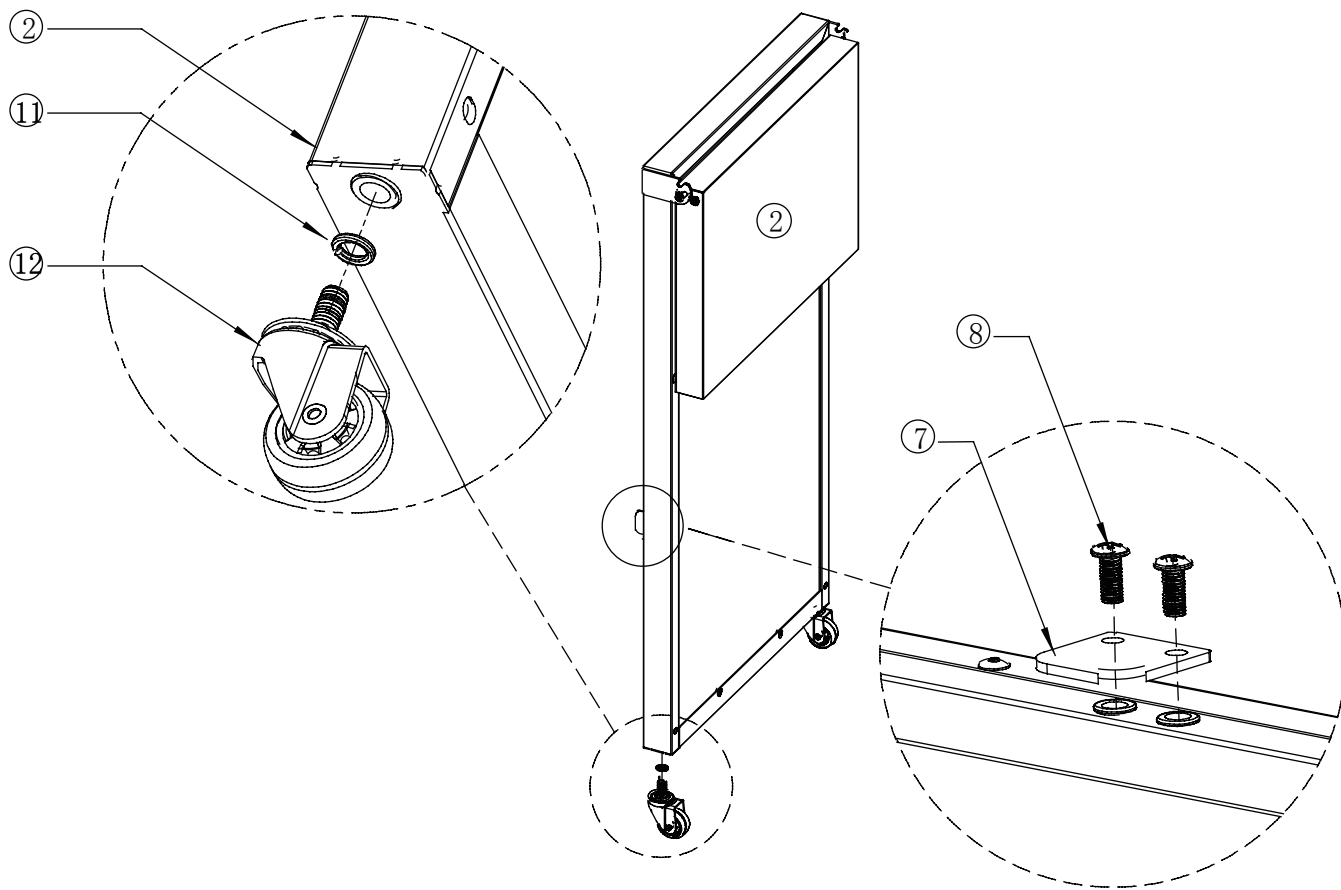
⑫ Wheel (2Pcs)



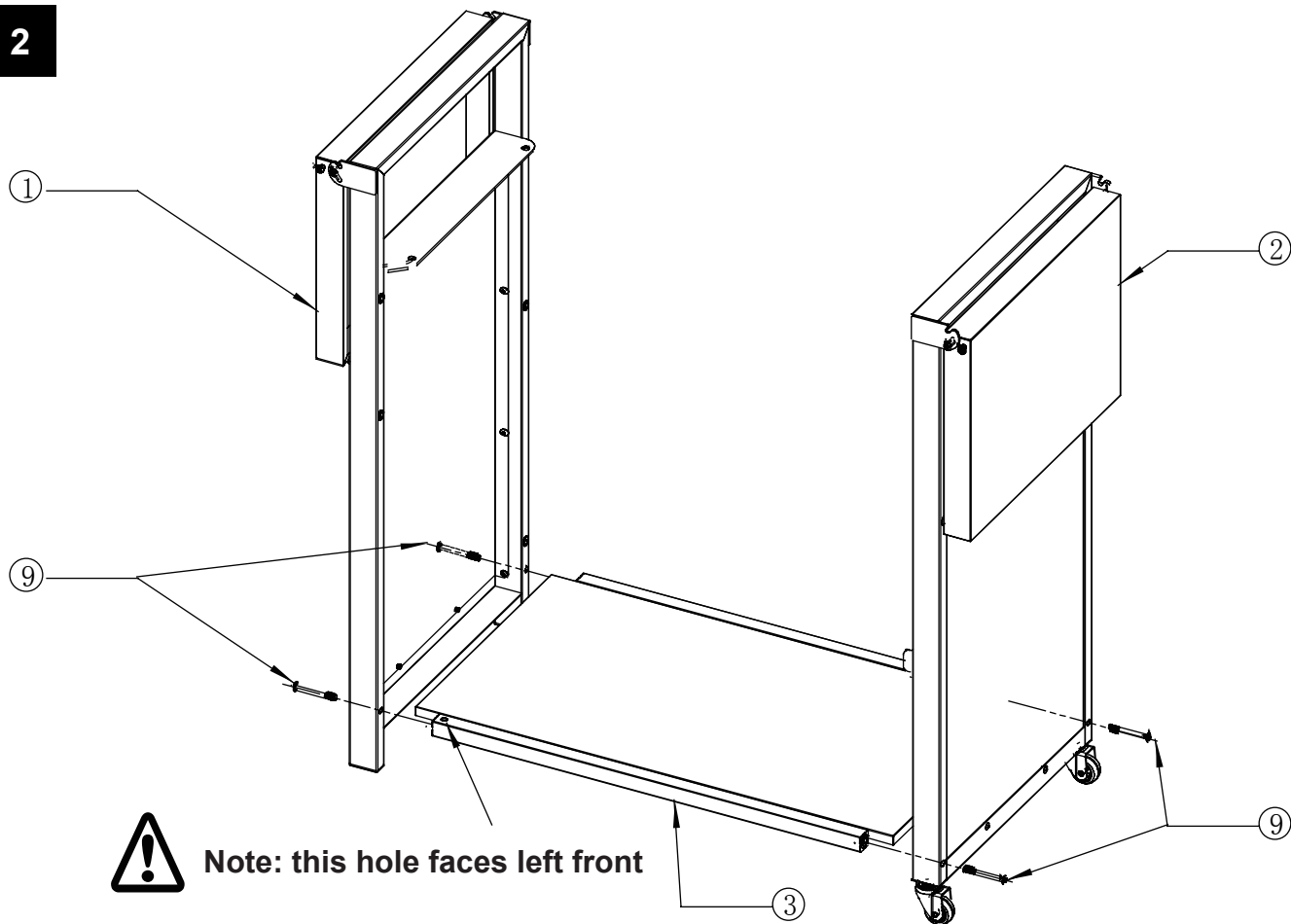
⑬ Wrench (1Pcs)



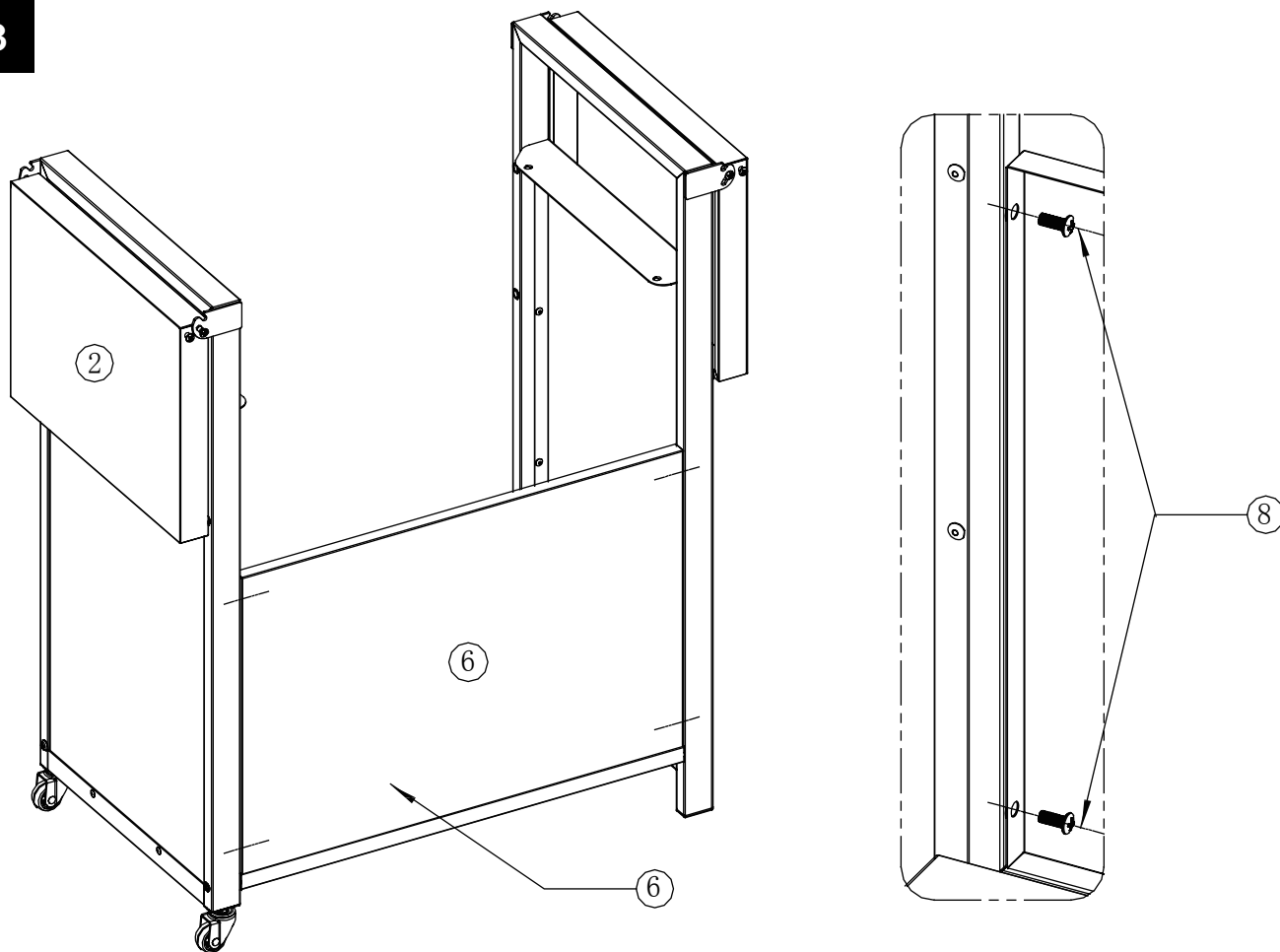
1



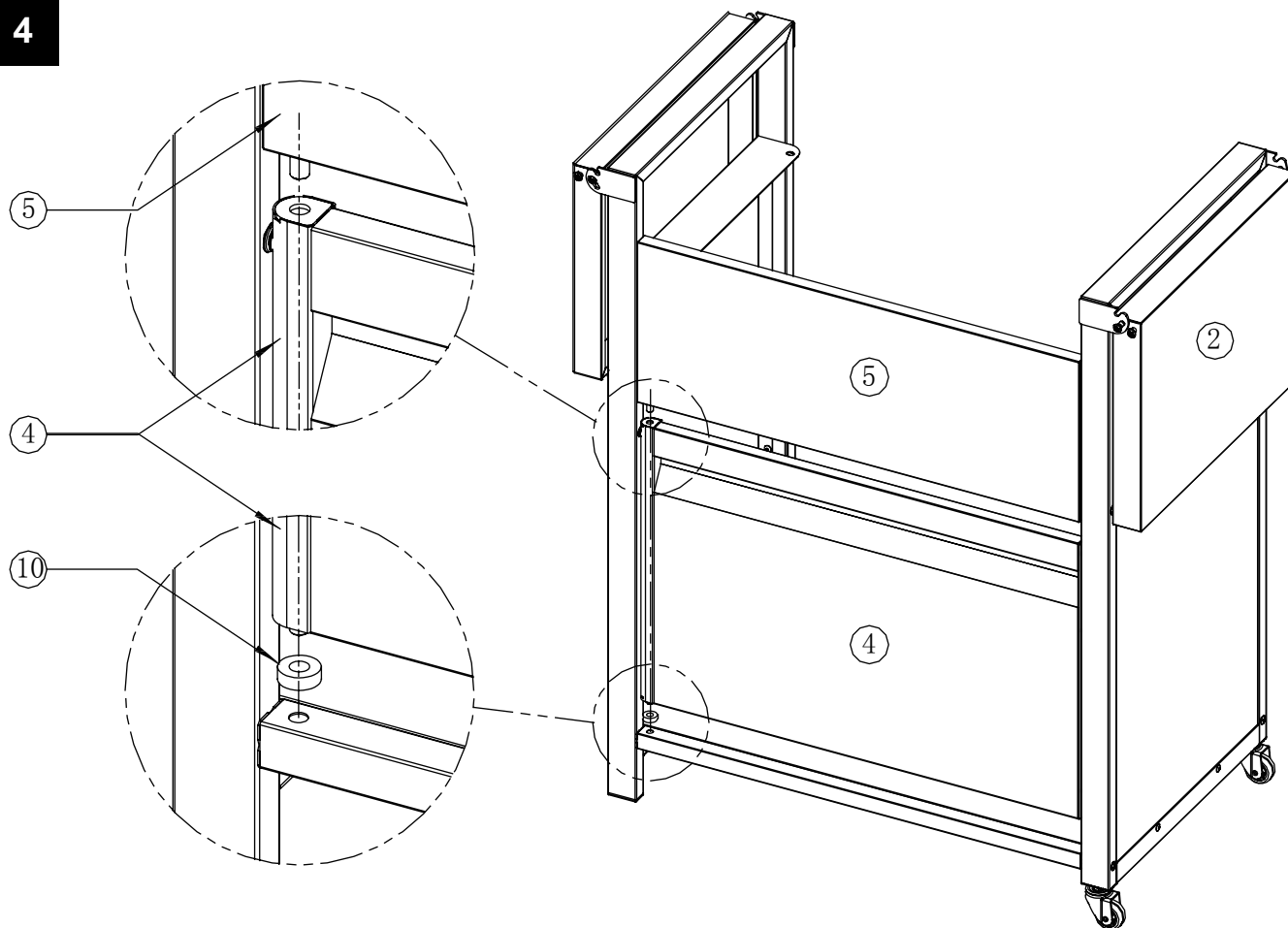
2



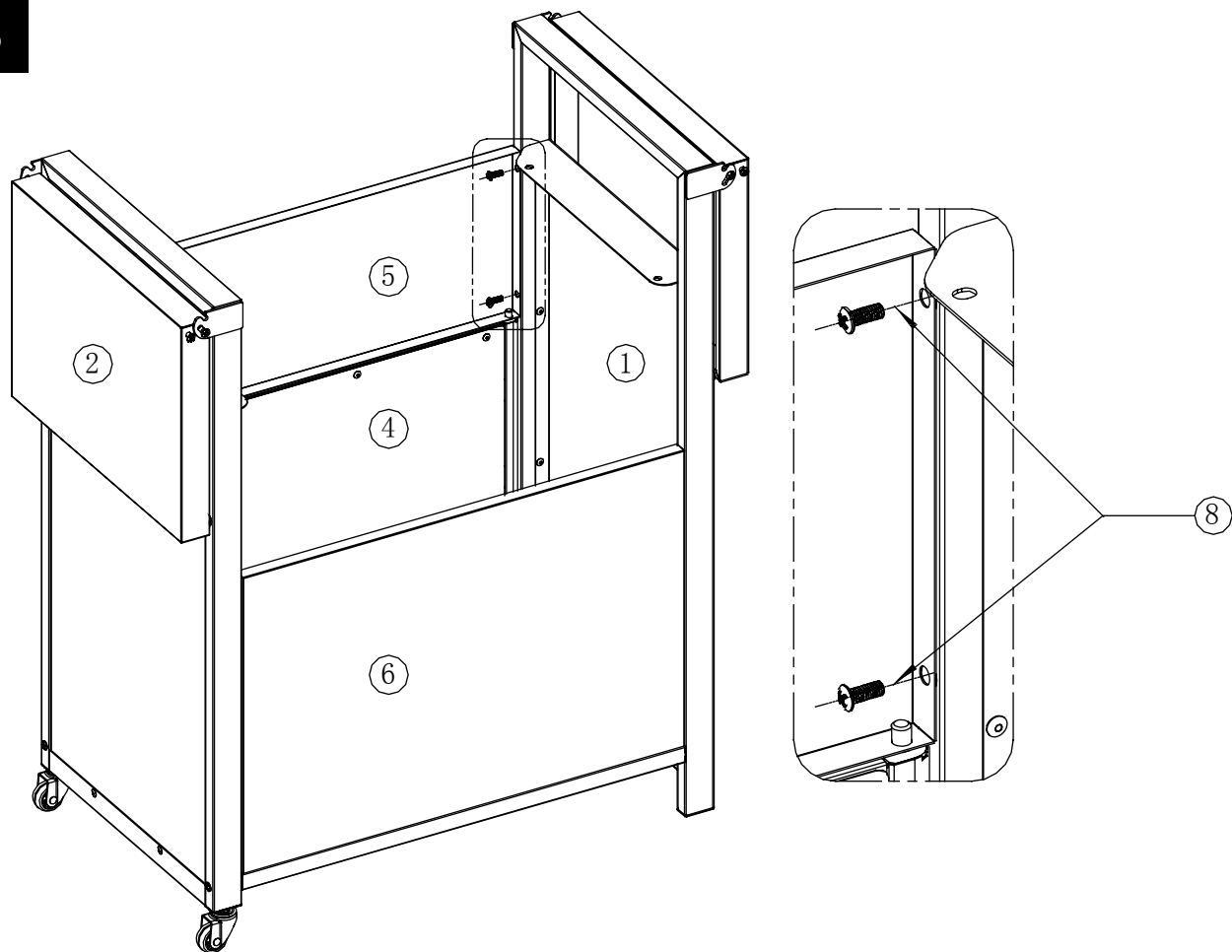
3



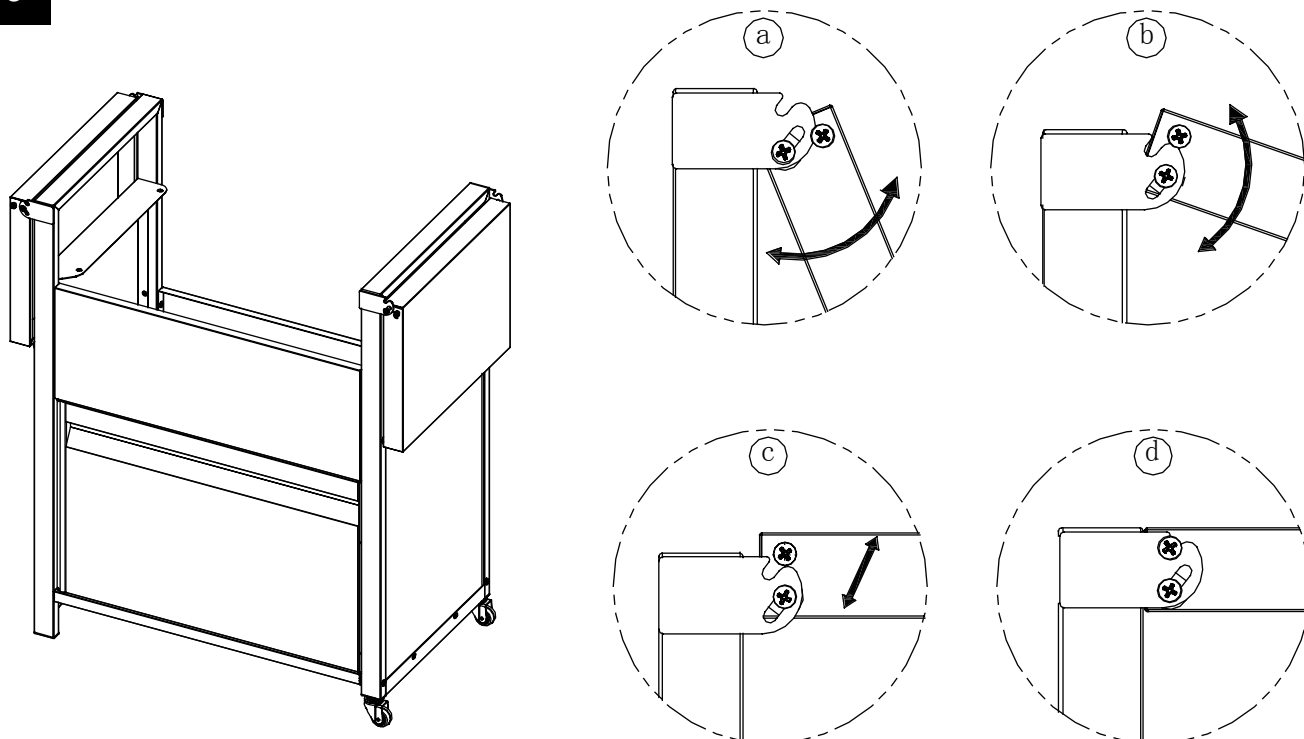
4



5



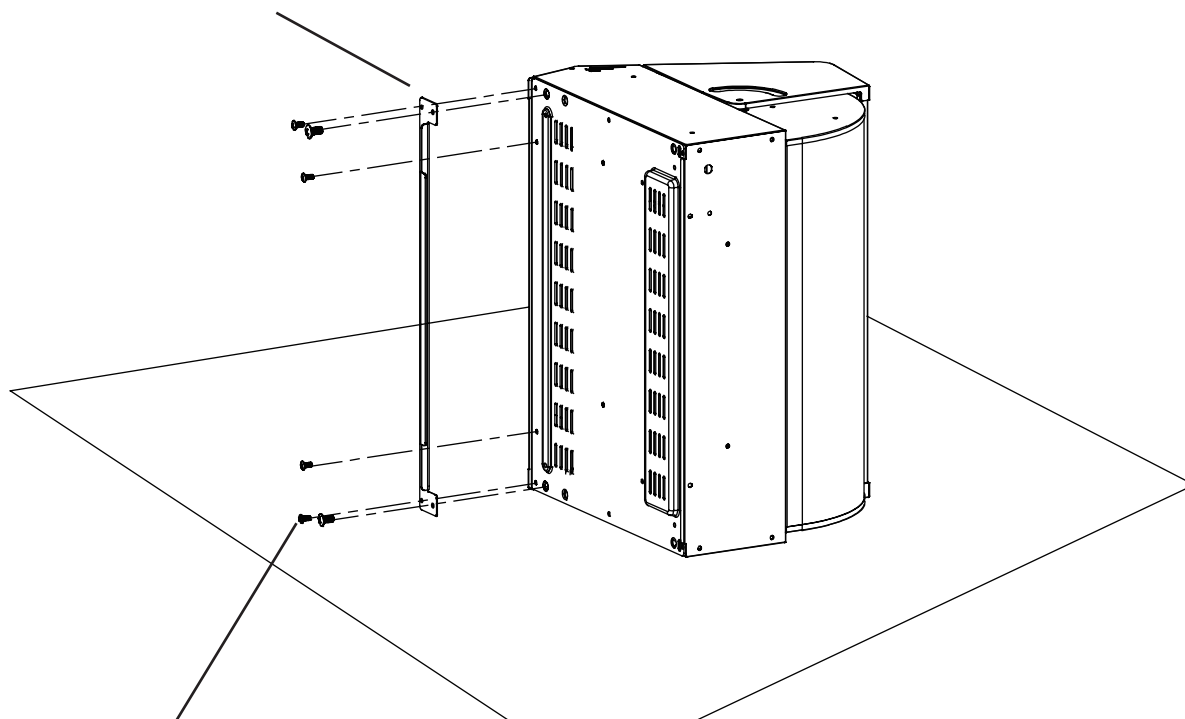
6



Side shelf unfold: a-b-c-d

7

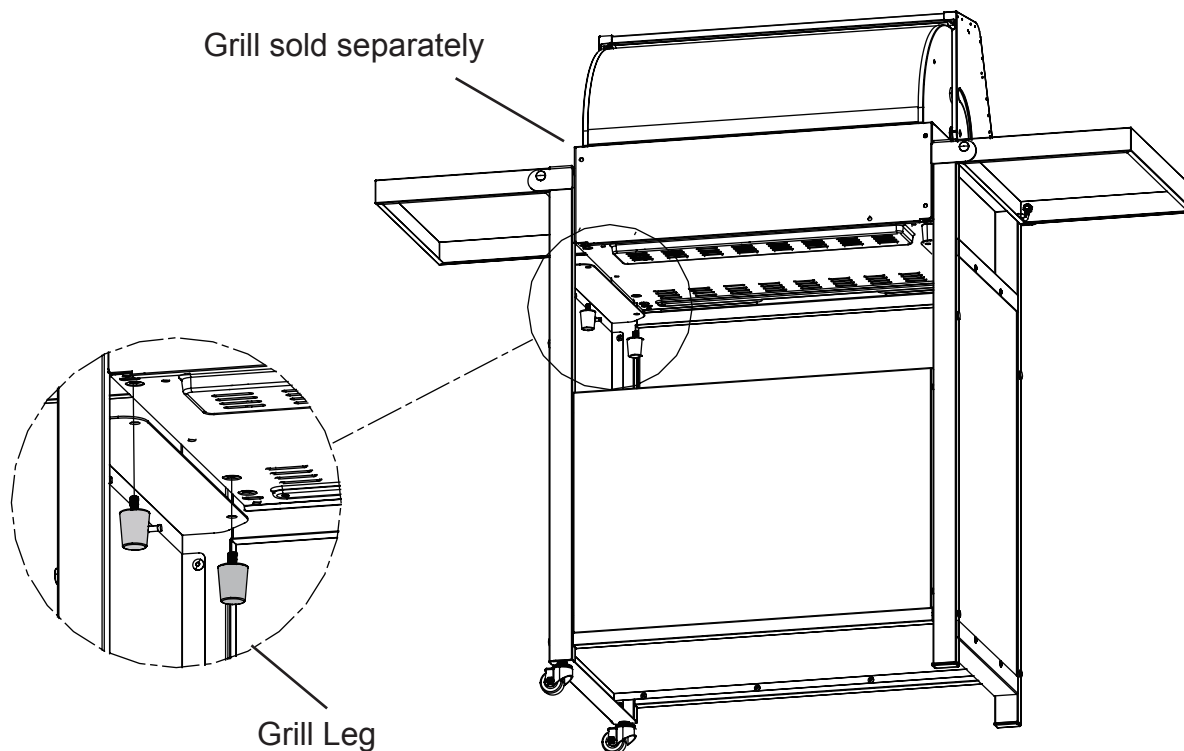
Remove bottom bracket from grill



Note: These 4 small screws need to be reinstalled after removing the bottom bracket.

8

Grill sold separately



Insert the grill into the cart from above and secure it with screws at the grill leg.

